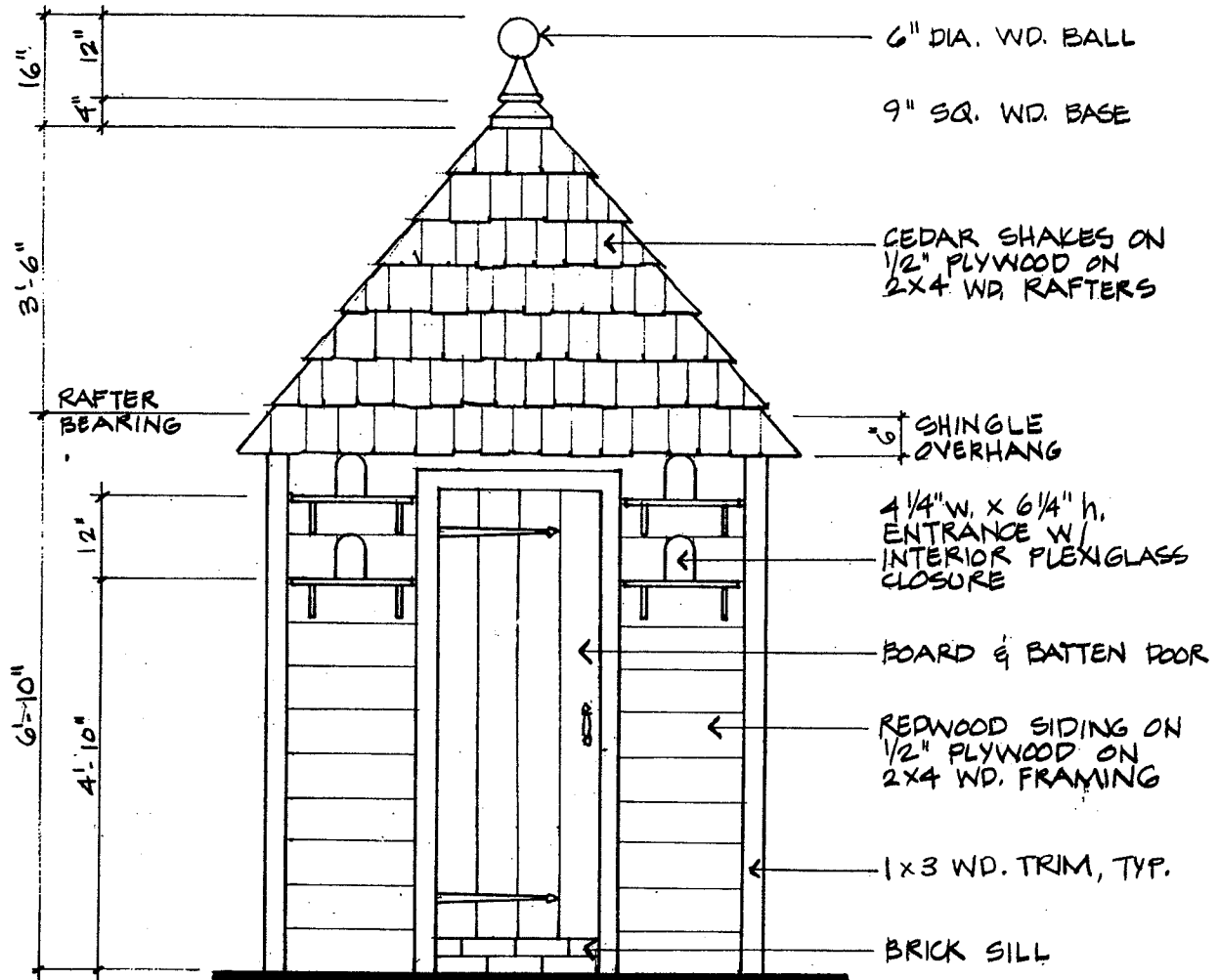
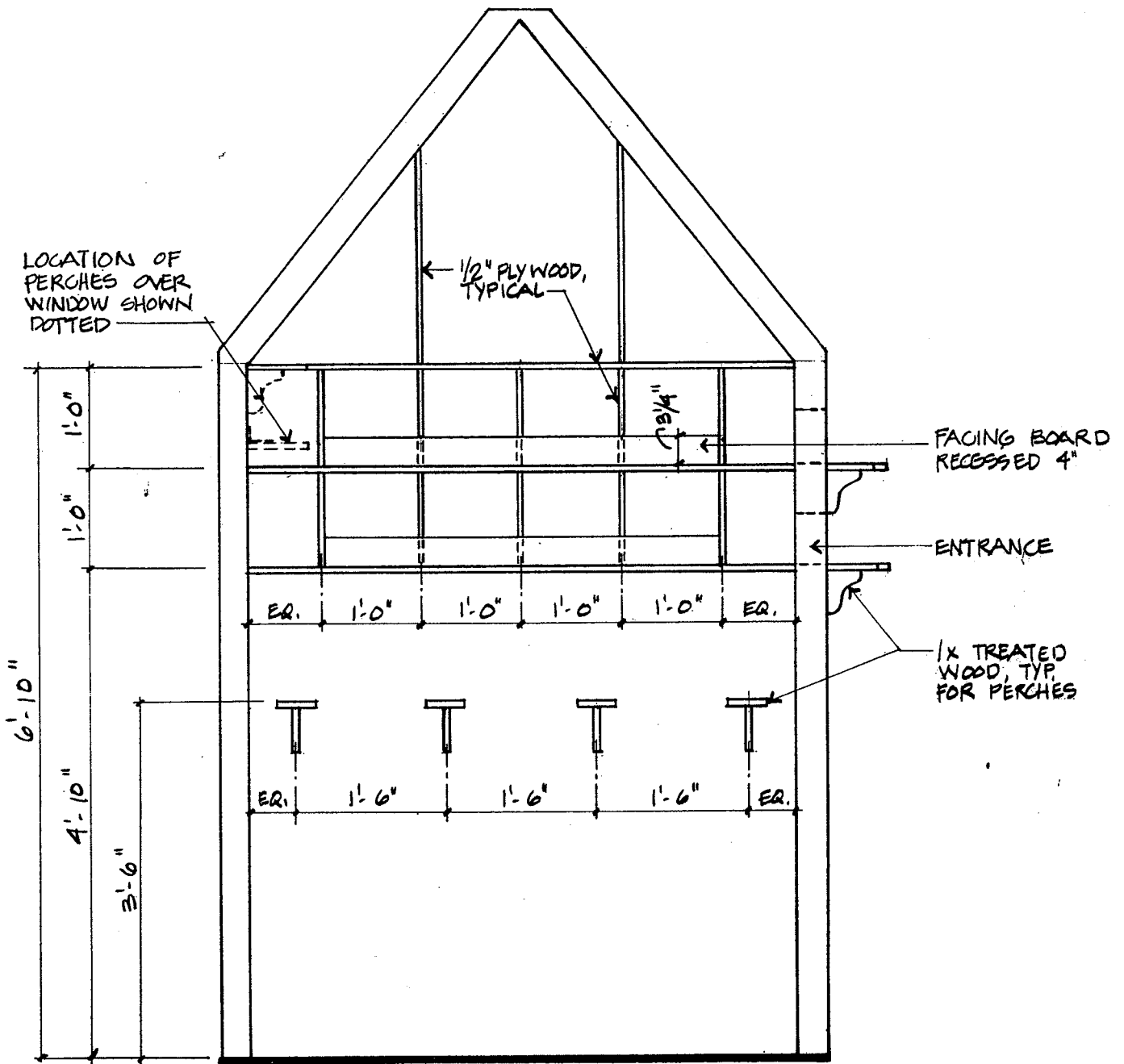


PLANS FOR A DOVECOTE

Dr. Richard Studebaker, a student of eighteenth-century decorative arts, incorporated a dovecote of his own design into the formal garden behind his 1797 home. The parterre garden features four box-bordered beds with four brick walks radiating from an eighteenth-century sundial at the garden's center. Here Dr. Studebaker shares his plans for those who want one for their own gardens. The structure could also function as a toolshed, potting shed, or pool house.

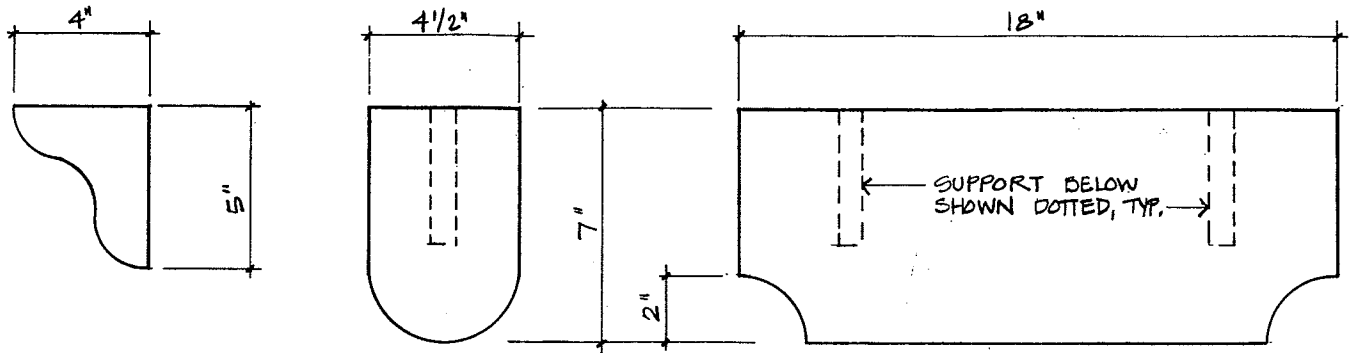


FRONT ELEVATION
 0 6" 1' 2' 3'



INTERIOR ELEVATION



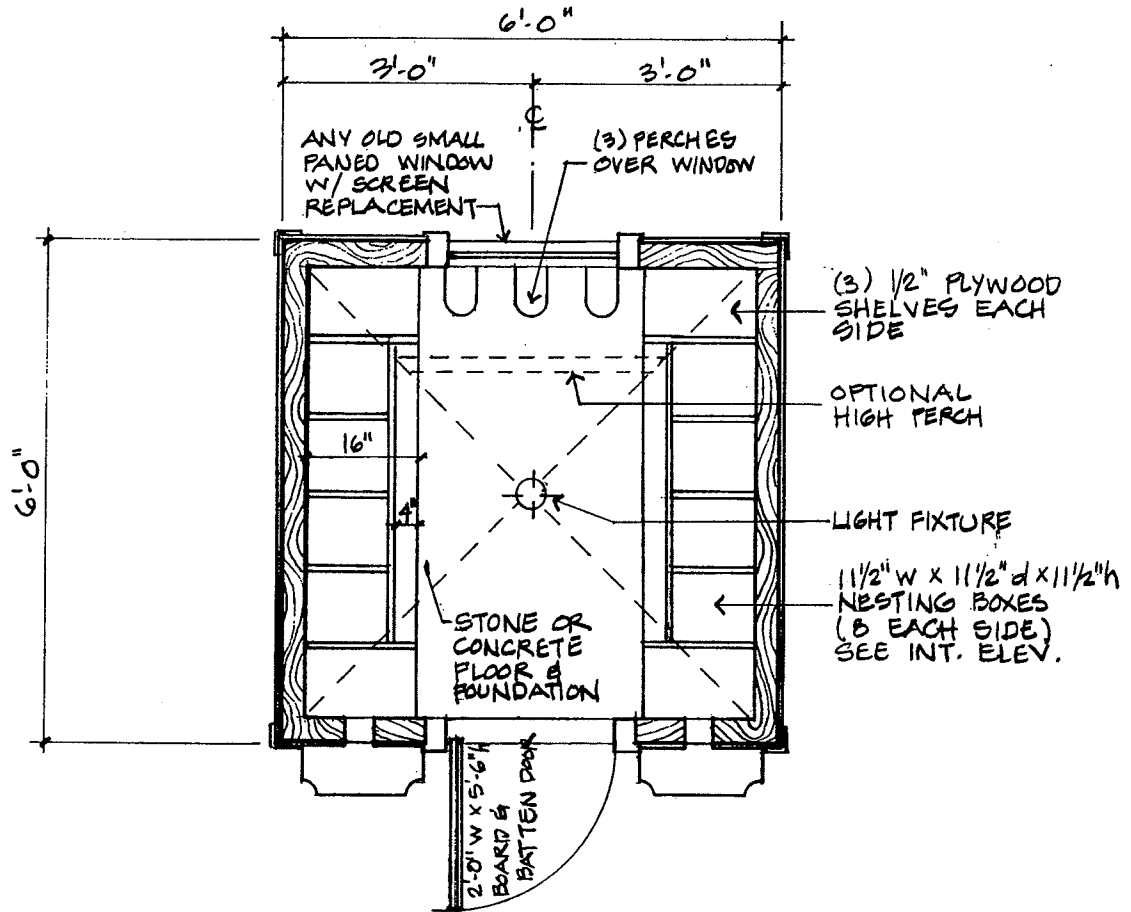
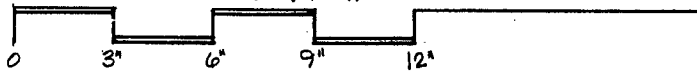


SUPPORT

INT. PERCH

EXT. PERCH

PERCH DETAILS



INTERIOR PLAN

